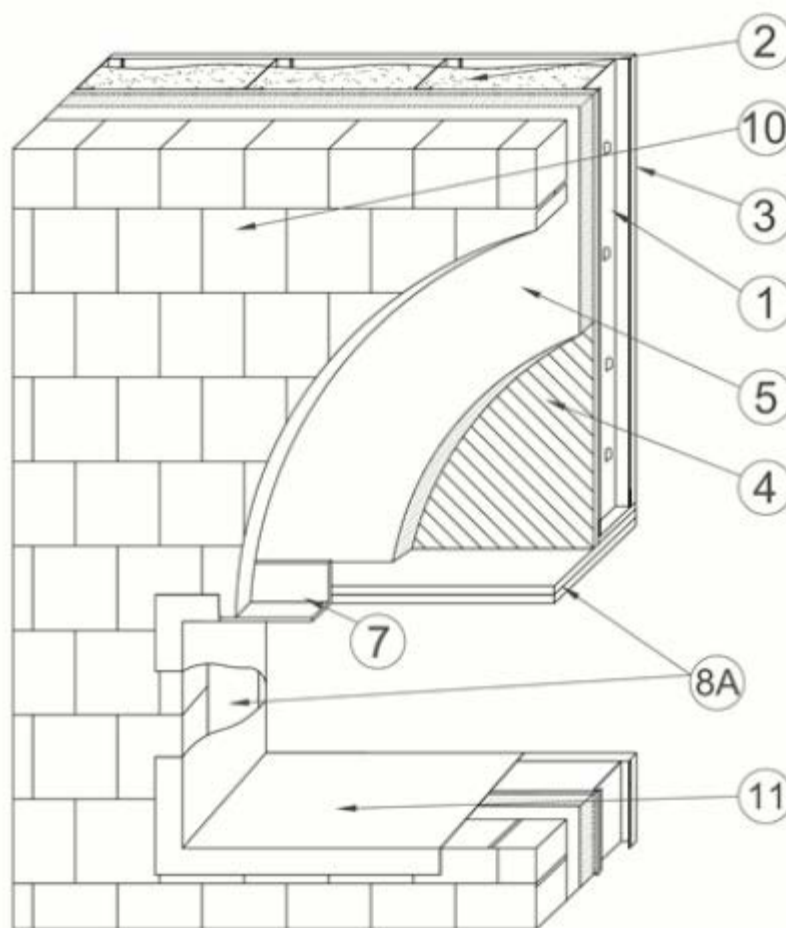


**FWFO.EWS0026**
Exterior Wall Systems[Page Bottom](#)**FWFO - Exterior Wall Systems**[See General Information for Exterior Wall Systems](#)**System No. EWS0026**

November 06, 2015

Exterior Wall System

1. **Steel Studs** — 3-5/8 in. (92 mm) deep, formed of min 20 ga. galv steel spaced max 24 in. (406 mm) OC.

1A. **Alternate Base Walls** — (Not Shown) — Cast concrete walls or concrete masonry units (CMU) concrete walls may be used in lieu of Items 1 through 4.

2. **Exterior Wall System Component (FWFX) — Foamed Plastic Stud Cavity Insulation*** — Spray applied foamed plastic insulation applied to the stud cavity. Foamed plastic insulation is sprayed onto the interior surface of the exterior gypsum board (Item 4). Maximum 2.3 lb/ft³ density, applied to a thickness for partial up to full stud cavity fill. When installed for a partial stud cavity fill the maximum air gap between the insulation and the interior gypsum board (Item 3) shall be max 1-1/8 in. (28.6 mm).

BASF CORP — Walltite® HP+, Walltite® US, Walltite® US-N, Spraytite® 81206

3. **Interior Gypsum Board (CKNX)*** — Min 5/8 in. (16 mm) thick, 4 ft (1.2 m) wide, attached to steel studs with 1-1/4 in. (32 mm) long, Type S steel screws spaced max 8 in. (203 mm) OC. Joints oriented vertically and covered with paper tape and joint compound. Screw heads covered with joint compound.

See Gypsum Board (CKNX) Category for names of Classified Companies.

4. **Exterior Gypsum Board (CKNX)*** — Exterior-grade glass mat gypsum board, minimum 1/2 in. (12.7 mm) thick, attached to steel studs with 1-1/4 in. (32 mm) long, Type S steel screws spaced max 8 in. (203 mm) OC. Joints oriented vertically or horizontally.

See Gypsum Board (CKNX) Category for names of Classified Companies.

5. **Exterior Wall System Component (FWFX) — Exterior Foamed Plastic Insulation *** — Nominal 4 by 8 ft (1.2 by 2.4 m) sheets of max 2.0 lb/ft³ density, max 4-1/2 in. (114.3 mm) thick expanded polystyrene insulation. Expanded polystyrene insulation secured over exterior gypsum board with self-tapping screws that are minimum 1 in. longer than the combined thickness of the EPS insulation and exterior gypsum board. Fasteners penetrate insulation and gypsum board and secure to steel studs. Insulation fasteners used in conjunction with 2 in. (51 mm) diameter, 0.2 in. (5 mm) thick plastic pronged continuous insulation washers, every 16 in. on center maximum. For securement to alternate base walls (Item 1A) of masonry nature, appropriate masonry fasteners shall be used that have equal to or greater engagement that the fasteners listed above, meeting the same spacing requirements as listed above.

BASF CORP STYRENIC FOAMS DIV — Rigid insulation board produced by a Classified company using resin beads designated as NEOPOR®

6. **Masonry Veneer Anchors** — (Not Shown) — Masonry veneer screw anchors with min 1 in. (25 mm) long self-drilling tip attached into steel studs. Length of masonry veneer anchor, not including self-drilling tip, shall be equal thickness of exterior foamed plastic insulation (Item 5). Includes flanged head/integral zinc/EPDM washer. Installed on each stud spaced 16 in. (406 mm) vertically. For securement to alternate base walls (Item 1A) of masonry nature, appropriate masonry fasteners shall be used that have equal to or greater engagement that the fasteners listed above, meeting the same spacing requirements as listed above.

7. **Steel Lintel** — Nom 4 by 4 in. (102 by 102 mm) by 3/8 in. (8.3 mm) thick steel angle supporting brick veneer at header at top of window opening and extending min 8 in. (204 mm) beyond each side of the window opening into the brick veneer mortar joints.

8. **Window System** — The following combinations of items shall be used around openings in the exterior wall system.

8A. **Plywood — Header and Jamb Protection** — Two layers of 3/4 in. (19 mm) thick plywood secured to header stud framing and jambs min No. 6 by 3 in. (72 mm) self-tapping steel screws. Plywood sheets span from interior gypsum board (Item 3) to back face of steel lintel (Item 7).

8B. **Fill, Void, or Cavity Materials (XHHW) — Caulk*** — (Not Shown) — Applied around perimeter of window opening to all joints between adjacent plywood pieces (Item 8A) as well as the interface between plywood and brick (Item 10) and plywood and steel lintel (Item 7).

3M COMPANY 3M FIRE PROTECTION PRODUCTS — CP25 WB+

9. **Mineral Wool** — (Not Shown) — Any nominal 4 pcf (64 kg/m³), 8 in. (102 mm) thick mineral batt insulation installed within stud cavity at floor line locations. Insulation installed filling full depth of stud cavity for the full depth of the floor line.

10. **Exterior Cladding** — The following items may be used as exterior finishing for the wall system:

A. **Exterior Veneer — Brick** — Nom 3-5/8 in.-thick clay brick offset to provide a nom 2 in. (50 mm) air gap between foam insulation (Item 4) and brick veneer with masonry veneer anchors (Item 6).

B. **Concrete** — Min 2 in. (51 mm) thick with max 2 in. (51 mm) air gap between exterior wall insulation (Item 4) and concrete.

C. **Concrete Masonry Units** — Min 2 in. (51 mm) thick with max 2 in. (51 mm) air gap between exterior wall insulation (Item 4) and concrete masonry units.

D. **Stone Veneer** — Min 2 in. (51 mm) thick natural stone veneer with any standard non-open joint installation technique.

E. **Terracotta Cladding** — Min 1-1/4 in. (32 mm) thick with any standard non-open joint

installation technique such as ship lap.

F. **Stucco** — Min 3/4 in. (19 mm) thick exterior cement plaster lath.

11. **Metal Flashing** — Min 0.080 in (2 mm) thick aluminum to cover all inner surfaces of window perimeter and conceal plywood (Item 8A). Min 25 ga thick steel flashing is also acceptable for use in this application.

*** Indicates such products shall bear the UL or cUL Certification Mark for jurisdictions employing the UL or cUL Certification (such as Canada), respectively.**

[Last Updated](#) on 2015-11-06

[Questions?](#)

[Print this page](#)

[Terms of Use](#)

[Page Top](#)

© 2016 UL LLC

The appearance of a company's name or product in this database does not in itself assure that products so identified have been manufactured under UL's Follow-Up Service. Only those products bearing the UL Mark should be considered to be Certified and covered under UL's Follow-Up Service. Always look for the Mark on the product.

UL permits the reproduction of the material contained in the Online Certification Directory subject to the following conditions: 1. The Guide Information, Assemblies, Constructions, Designs, Systems, and/or Certifications (files) must be presented in their entirety and in a non-misleading manner, without any manipulation of the data (or drawings). 2. The statement "Reprinted from the Online Certifications Directory with permission from UL" must appear adjacent to the extracted material. In addition, the reprinted material must include a copyright notice in the following format: "© 2016 UL LLC".